

Georeferencing

Susan Powell, GIS & Map Librarian

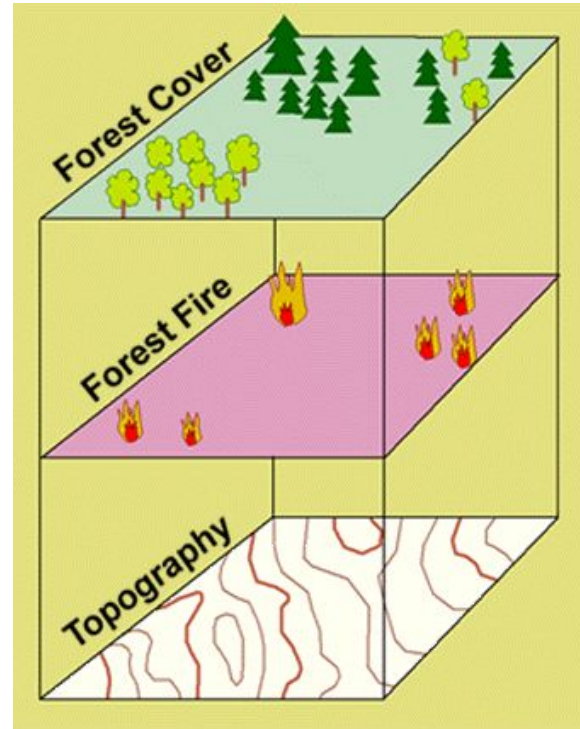
Road “map”

- Introduction to geospatial concepts
- Theory of georeferencing
- Sources for data
- Ready, set, georeference!

Introduction

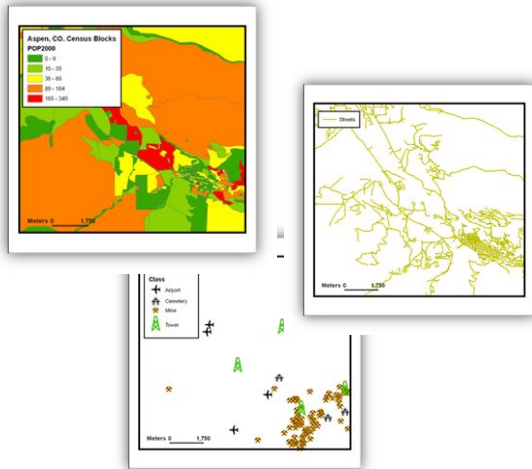
What is GIS?

**Geographic
Information
System/Science**

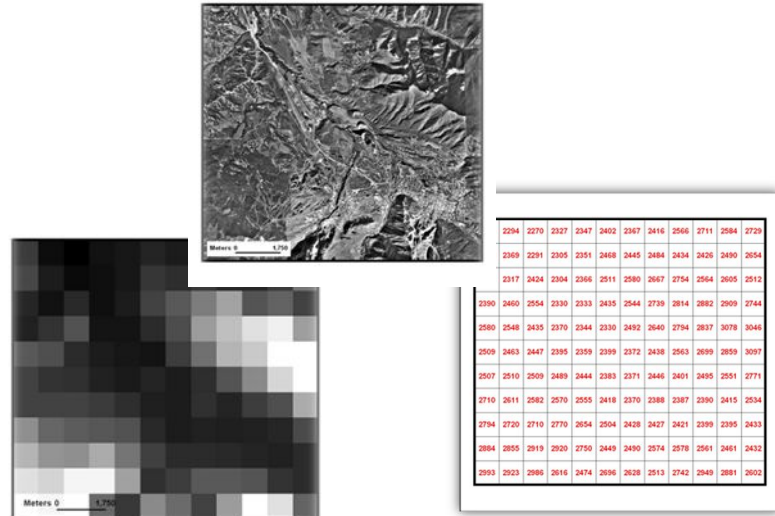


Types of data

VECTOR

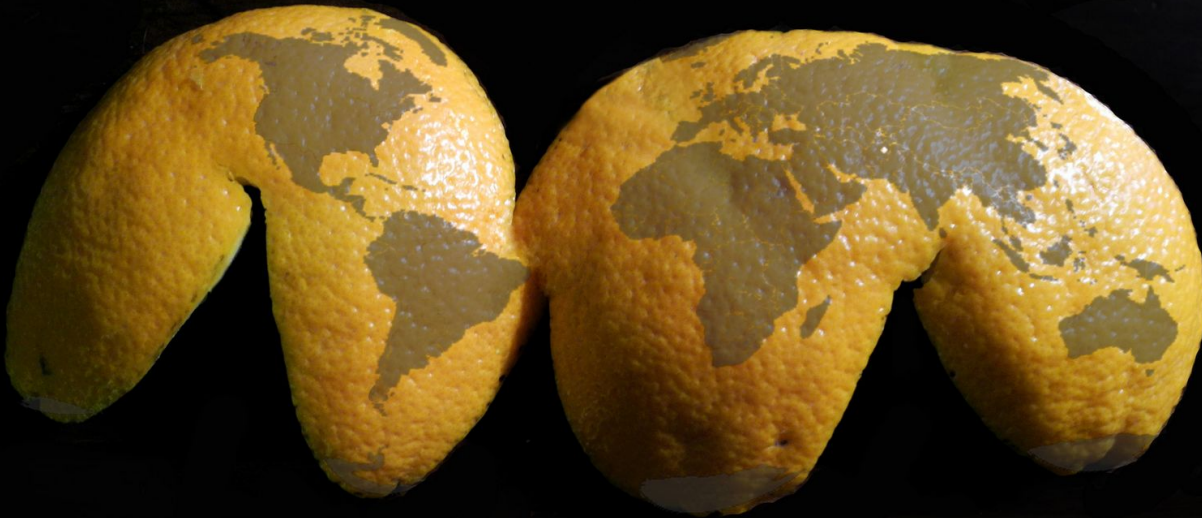


RASTER

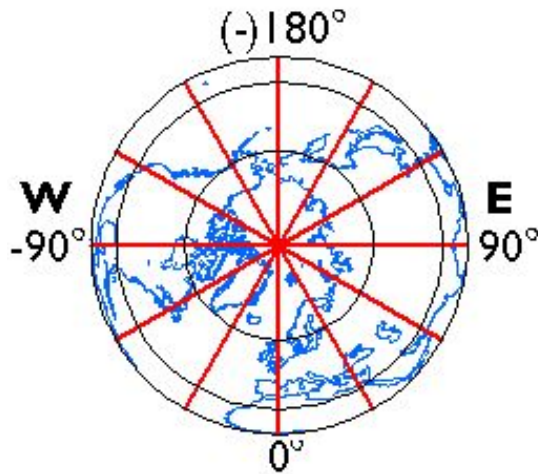


Spatial reference system

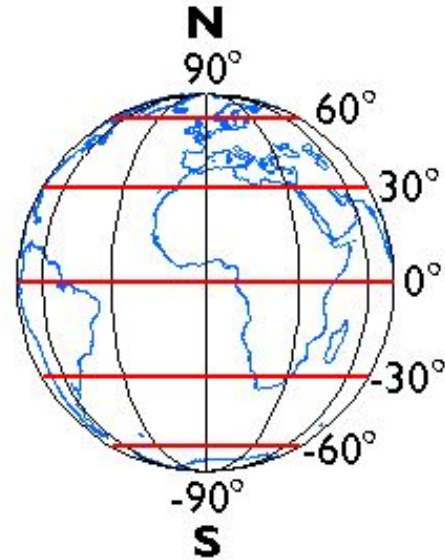
ORANGE PEEL CONTINENTAL GOODE HOMOLOGINE



Geographic coordinate systems

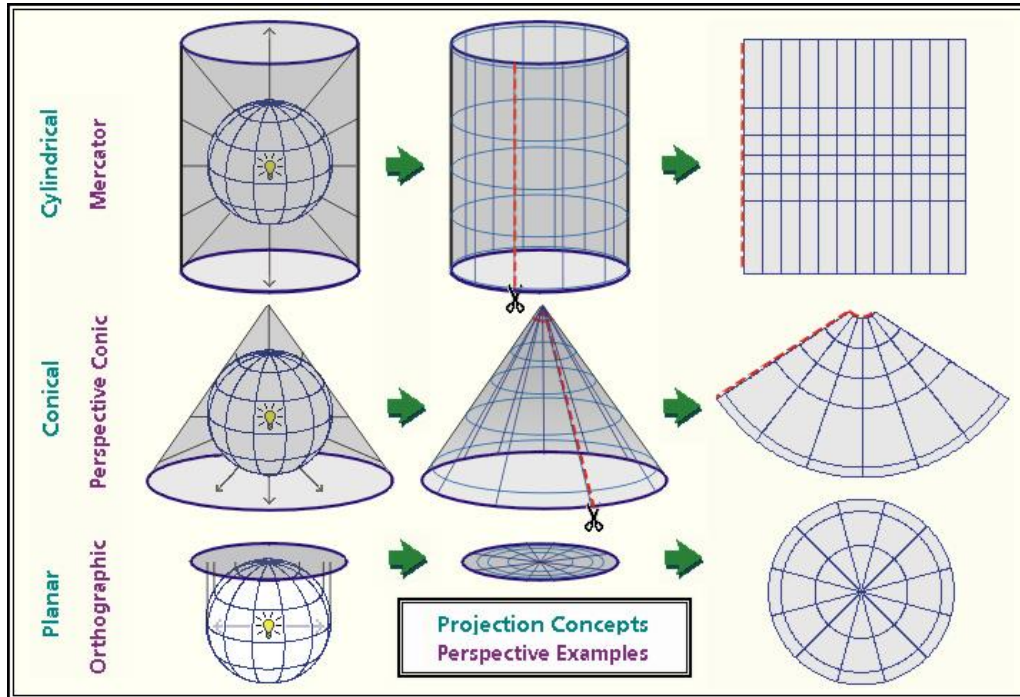


Longitude

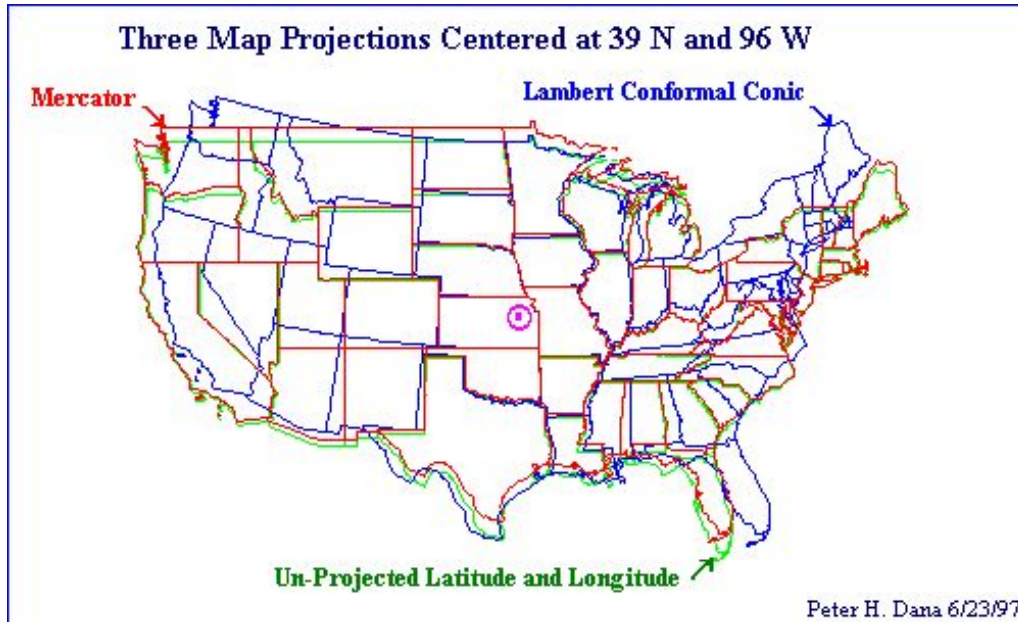


Latitude

Projected coordinate systems



Projected coordinate systems



Geo-referencing



Fun examples

[Photogrammar](#)

[Atlas of the Historical Geography of the US](#)

Essential components

- GIS software program
- Spatial reference system

Guide to projections: <http://pubs.usgs.gov/pp/1453/report.pdf>

- Un-referenced map or image
- Reference layer (or control points)

Sources for Scanned Maps

- David Rumsey <http://www.davidrumsey.com/>
- NYPL Map Warper <http://maps.nypl.org/warper/>
- Hipkiss' Scanned Old Maps (from books)
 - <http://www.hipkiss.org/data/maps.html>
- Old Maps Online (search across collections)
 - <http://www.oldmapsonline.org/>

For more go to: guides.lib.berkeley.edu/maps

What to look for in a map

You can geo-reference pretty much just about anything, but some work better than others!

For web-based:

small areas or Mercator projections

Basic steps

1. Identify geospatial reference system of map
2. Load un-referenced map and reference layer
3. Create ground control points (GCPs)
 - a. Drop point on map
 - b. Drop corresponding point on reference layer or enter map coordinates

Placement of GCPs

- Look for stable, identifiable landmarks
 - Road intersections, property boundaries, buildings
(depending on scale)
- Aim for equal distribution
- Use trial and error

Ready, Set, Georeference!

Do More!

Publish your map online.

Digitize features.

Georeferencing with Map Warper (browser based)

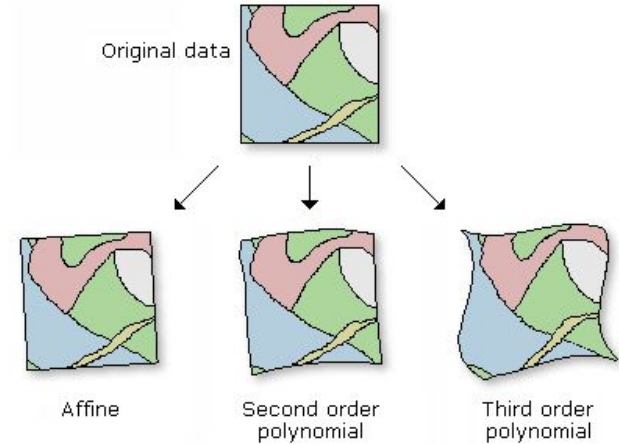
Basic steps

1. Find an image to georeference
2. Create an account with [MapWarper.net](https://www.mapwarper.net) &/or login
3. Upload map and add metadata
4. Rectify!
5. Export...

Georeferencing with ArcMap

Transformation types

- Polynomials
 - 1st-order (Affine): Stretch, scale, rotate
 - 2nd- & 3rd-order: Bend, curve
- Spline: Privileges GCPs
- Adjust: Optimizes for both global and local fit
- Projective: Warped lines remain straight, but no longer parallel. Good for oblique imagery.



Re-sampling methods

- Nearest Neighbor
 - For discrete data
- Bilinear Interpolation
 - For continuous data, smoothing effect
- Cubic Convolution
 - For continuous data, sharpening effect

Ready, Set, Georeference!

Download materials for
“Georeferencing with ArcMap” from:

guides.lib.berkeley.edu/gis/training

Susan Powell, GIS & Map Librarian

smpowell@berkeley.edu

Please contact me if you have questions or would like to set up an appointment.